

MOUNTAIN TOP RETREAT

168 COUNTY ROUTE 6, THE HULETT'S RAOD

Full 40 mile views into Vermont Winter Skiing and snow mobile trails right there, and then summer season at Hulett's Landing just over the hill on Lake George.

A semi open floor plan wraps all daily activity functions into this newly fully remodeled farm house, which has also, 3 bed Rooms and two baths, featuring a very large Master Suite with a lovely 6 x 6 walk out deck attached overlooking lawns, more lower decks and an outdoor fire place into the state of Vermont.



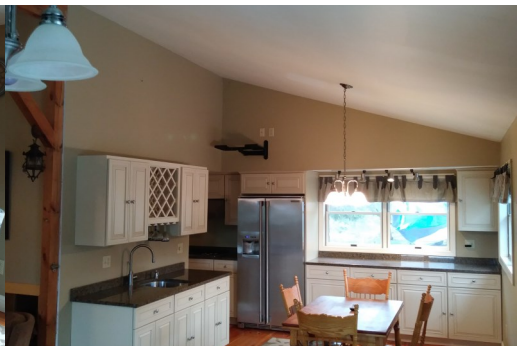
Granite tops in the commodious kitchen featuring top line appliances, tile and wide pine floors. Fresh sheet rock walls, cathedral ceiling from the central fire place up and a main floor laundry too.

Extra lots of closets in a really clean fun home ready for your family. Lots of stoned parking and lawns.

And Boat can be included too!

Combined Taxes \$ 5,856

Price \$ 242,500



salesperson:
Jim Hudson
518 499 2707
Cell 265 3212

Real Estate Innovations

office
Clemons NY
518 499 9043